

# Leap into learning 2014



C&K Presents

## Professional development for the early childhood sector

Promoting excellence in the early childhood sector

All professional development included in this booklet promotes practice in line with the National Quality Standard

## CEO Message



**Welcome to C&K's inaugural 2014 Professional Development Handbook.**

**C&K has proudly supported early childhood educators on their professional journeys for over one hundred years. Today we enjoy positive, sustained and fruitful relationships with a variety of experts, institutions and organisations and are actively engaged in pursuing and sharing emerging and prevailing ideas in the early childhood education and care community.**

In this handbook you will find focused, topical and relevant professional development opportunities that will excite your interests and meet your professional needs across a variety of areas and through a variety of means.

We understand that early childhood professionals live and work with diverse communities and are located in metropolitan and regional areas of the state. So we've created opportunities for professionals to come together at development days and workshops, alongside parents at parent forums or through live online webinars, where virtual learning communities can share ideas, research and solutions, no matter where you live and work.

Of course, there is also the 2014 Queensland Early Childhood Annual Conference held in Brisbane 6 to 8 June 2014 where local and international presenters will come together to share ideas, examine hot topics, celebrate, network and learn!

If you are seeking formal qualifications, C&K College of Early Childhood will be able to provide the professional support that you need. It is one of Queensland's leading early childhood training providers, offering nationally recognised courses that open a world of opportunity in early childhood education and care.

I am sure that you will find this handbook of great value, no matter where you work, where you live or where you are on your own professional journey.

Best wishes for 2014

**Michael Tizard**

Chief Executive Officer



## Contents

Introduction .....	2
Professional development - making the right choice.....	3
Queensland Early Childhood Annual Conference 2014.....	5
Face to face training .....	12
National Quality Standard .....	13
QA1 - Educational program and practice .....	14
QA2 - Health and safety.....	16
QA3 - Physical environment.....	16
QA4 - Staffing arrangements.....	19
QA5 - Relationships with children.....	19
QA6 - Collaborative partnerships.....	20
QA7 - Leadership and service Management.....	21
Accredited courses .....	23
Face to face training by region.....	23
How to register.....	23
Region 1 - Cairns & Far North Queensland.....	24
Region 2 - Townsville & West .....	25
Region 3 - Mackay & Whitsundays.....	27
Region 4 - Rockhampton.....	28
Region 5 - Central West.....	30
Region 6 - Wide Bay Burnett .....	31
Region 7 - Sunshine Coast.....	32
Region 8 - South West & Darling Downs .....	33
Region 9 - Ipswich .....	34
Region 10 - Gold Coast.....	35
Region 11 - Brisbane .....	36
Online .....	39
FAQs .....	41
Specialist C&K courses.....	45
Community connections.....	49

## Introduction



At C&K we are dedicated to offering the very best professional development opportunities that we can generate and source. We understand that early childhood professionals are busy and often time poor people who are looking for engaging, reliable, suitable and well priced courses that are compatible with the Early Years Learning Framework and the National Quality Standard.

We also understand that ongoing learning is essential for professional growth and career development. The courses contained within this handbook are designed to meet your needs across the year. Whether you are new to the profession or experienced, whether you are working in kindergarten, long day care, family day care, occasional care or outside school hours care, C&K can be there alongside you from year to year.



C&K is committed to addressing the real professional development needs of the wider early childhood education and care community and welcome your suggestions about what you would like to see offered.

We can be contacted at [ckevents@candk.asn.au](mailto:ckevents@candk.asn.au).



# Professional Development - Making the Right Choice

Professional development opportunities vary and can be accessed in a number of ways, but you need to make the right choices depending on where you are located, your experience and which service type you work in.

## How is professional development delivered by C&K?

### Conference:

A conference is a face to face event, often constructed around a central theme or strands that provide both broad and focussed professional development opportunities.

### Workshop:

A workshop is interactive, usually one to two hours long and focuses upon a particular area of professional interest. Workshops can be delivered either face to face or via webinar.

### Master class:

A master class is a standalone session, either delivered face to face or via webinar that is designed for participants with prior experience and knowledge of the topic.

### Workshop/Master class Series:

A workshop/master class series is interactive, comprising of a number of related sessions. These can be delivered through face to face, webinar or through a combination of both.

### Webinar:

A webinar is an online workshop, workshop series, seminar, learning circle, hub group or training course conducted over the internet.

### Face to face:

Face to face describes any professional development that is conducted with the presenter/facilitator and participants in the same room.

### Hub groups:

Hub groups are facilitated meetings where groups with a particular shared interest meet, either face to face or via webinar.

### Action research:

Action research usually involves groups with a particular shared interest meeting, either face to face or via a webinar with the goal of influencing positive change in the early childhood sector.

### Online training:

Online training is a self paced online session you can do at a time convenient to you.

### Accredited training:

Accredited training is delivered either face to face or via online webinar that awards competencies towards a qualification through the C&K College of Early Childhood.

## What about my level of experience?

C&K understands that all early childhood education and care professionals are unique and at different levels on their professional learning journeys, so to assist you with making the right decision, all of our professional development is matched to introductory, intermediate and advanced levels of experience.

### Introductory:

Introductory professional development is intended for those who are new to the profession or with limited understanding of the topic.

### Intermediate:

Intermediate professional development is intended for those with some knowledge or experience of the topic.

### Advanced:

Advanced professional development is intended for those with a greater level of knowledge and experience who wish to be challenged and provide leadership.

### All educators:

Sometimes professional development is designed with all educators in mind. For instance, when a group of staff members from a service wish to attend together or when those with more evolved skills or knowledge are seeking to revisit or refresh their skills.

## Is my service type relevant when choosing?

Sometimes professional development is offered with specific workplaces in mind. You will find this information when perusing each course in the handbook:

- Kindergarten
- Family day care
- Occasional care
- All services
- Long day care
- Prep
- Outside school hours care

### Don't forget!

Sometimes the opportunity to provide professional development occurs at short notice and at C&K we never shy away from offering all that we can! It is always a good idea to visit the C&K website [www.candk.asn.au](http://www.candk.asn.au) to view the professional development courses and events on offer.

C&K presents

# 2014 Queensland Early Childhood Annual Conference



# INNOVATION IN A CHANGING WORLD

Saturday 7 and Sunday 8 June 2014 | Brisbane Convention and Exhibition Centre

# Queensland Early Childhood Annual Conference 2014

Friday 6 June - Sunday 8 June 2014

Brisbane Convention and Exhibition Centre, Southbank

## INNOVATION IN A CHANGING WORLD

Contemporary life in Australia, and across the world, finds us confronted by change on a regular basis. It is impossible to compartmentalise change. It just seems to ripple across our collective and individual experiences, with the result that our personal and professional lives never appear to be at a standstill. Some of us struggle with change; some of us accept it and others embrace it.

In 2014, many Australian early childhood professionals are going beyond responding to the National Quality Standard agenda and other demands. They are relishing the challenge and exploring innovative, dynamic and creative ideas that support unique approaches to engage with children, families and communities. At the Queensland Early Childhood Annual Conference 2014 we will share ideas and approaches with participants that will affirm and inspire.

**Invited speakers will deliver innovative ideas and research on:**

### 1. *Education and excellence*

Children, families and educators play, learn, live and teach together in a range of environments. This strand will explore innovative and creative pedagogical approaches that respond to the National Quality Standard agenda. There will be opportunities for discussion, participation and showcasing inspirational projects, thinking and research.

### 2. *Creating and sustaining communities*

Creating and sustaining communities encompasses social justice, effective social leadership and a close relationship between contemporary early childhood education policy, provision and pedagogy. Increasingly, interagency relationships are successfully responding to the needs of children, families and communities. This strand will explore ideas, practice and projects in relation to Australia Early Development Index (AEDI) data, equity and equality, culturally and linguistically diverse communities, Aboriginal and Torres Strait Islander partnerships and government programs that have a focus in this area.

### 3. *Health, wellbeing and change*

This strand will address innovation and change that supports children, their families and educators to successfully participate in their unique teaching and learning settings. It will also consider children's connections with their local communities and how this supports their wellbeing and engagement with learning.

Presentations explore child protection, intervention, connecting children with nature, environmental education, sustainability at a local community level, and change management.

---

## Master of Ceremonies

### Virginia Trioli

**Virginia Trioli has presented on ABC News Breakfast since late 2008. She is the voice behind ABC Radio's *Drive* in Melbourne, a program renowned for discussing and examining current news topics, controversial conversations, and the issues of the day, with a healthy dose of traditional Australian larrikinism thrown in.**

Virginia has established a reputation as a strong independent voice on politics, social issues and the arts. Virginia appears regularly on ABC TV's *Insiders* analysing federal politics and is a frequent lecturer and public speaker.

Virginia is the author of *Generation F: Sex, Power and the Young Feminist*, as well as numerous columns, articles and comment pieces published in Australia and abroad.



## Keynote speakers

### Mark McCrindle

Mark McCrindle is an international social researcher renowned for tracking and analysing emerging issues and social trends. Mark's understanding of key social trends, as well as his engaging communication style, place him in high demand.

Mark is an award-winning social researcher, bestselling author and influential thought leader. Mark is regularly commissioned to deliver strategy and advice to the boards and executive committees of some of Australia's leading organisations.

Mark is the author of three books on emerging trends and social change. *The ABC of XYZ: Understanding the Global Generations*, *Word Up: A Lexicon and Guide to Communication in the 21st Century* and *The Power of Good*.

---

### Professor Marilyn Flear

Professor Marilyn Flear is the Research Director of the Faculty of Education at Monash University and also the Research Leader for the Early Childhood Faculty Research Group.

Marilyn has worked in education for 25 years beginning her career as an early childhood teacher in a childcare centre, preschool and kindergarten. She was then seconded to the Department of Education, Aboriginal Education Branch, as an advisor, later as a Curriculum Officer and finally as a Research Officer. In 1988 she accepted an appointment as Professor of Education at the University of Canberra.

Marilyn has a diverse range of research interests including: cross-cultural research, family studies, early childhood science education, technology education, and the building of new theoretical tools to support early childhood development and education.

---

### Peter Baines

Peter Baines, a former forensics officer with the NSW Police developed his unique leadership style by leading international recovery teams into Indonesia and Thailand following the Bali bombings in 2002 and the tsunami in South East Asia in 2004. Moved by the children left orphaned after the tsunami, Peter founded the boutique charity *Hands Across the Water* to support them.

Peter received the NSW Police Service Medal and the Australian Federal Police Operations Medal for his work in Asia. Peter was the first NSW Police Officer to be awarded the Humanitarian Overseas Service Medal and the Australian National Medal.

Today Peter spends his time helping organisations build effective sustainable leadership programs, strengthening corporate social responsibility initiatives and leading the *Hands Across the Water* team in supporting their orphanages.

---

### Dan Donahoo

Dan Donahoo has spent 15 years creating tools and programs to support the development of children and young people. He has worked in capacity-building projects such as the Laverton Early Years Project and the Department of Education and Early Childhood Developments Media Resource Program to explore the benefits of technology for early years professionals.

Trained in childhood development through his work in childcare, as a toy librarian and in early childhood intervention, Dan took this knowledge into his work with public policy think tank OzProspect where he explored child and family policy. His two books *Idolising Children* (2007) and *Adproofing Your Kids* (2009) both centre upon the importance of respecting children.

More recently, Dan has researched and explored the role of technology in the lives of young children.

# Queensland Early Childhood Annual Conference 2014 (cont)

## Invited speakers

### John Joseph

John Joseph is a former teacher and university educator, tradesperson, businessman and trainer. John grew up in Adelaide and left school before completing Year 10 to undertake training as an apprentice plasterer. After working in the family business for 11 years John returned to formal education and graduated with a Masters Degree in Mathematics and Science Education.

John is a leading authority on education and has worked with more than 300,000 delegates from more than 3,500 schools across 26 countries. John has a real passion for neuro-education. John's focus is on learning: how it happens; how to maximize it; how to inspire it in students; and practical strategies to enhance it.

### Anthony Semann

Anthony Semann is a Director at Semann & Slattery, a consulting and research company. Anthony has a degree in education, Masters in sociology and is currently completing a PhD investigating the relationship between courage and leadership.

Anthony is a self-labeled 'leader-holic' and is intrigued by the ways in which individuals understand and enact personal and educational leadership. Anthony's work has seen him research, present and consult in New York, France and New Zealand.

More recently Anthony has been a lead researcher on a number of research projects exploring the role of educational leadership.

### Prudence Murphy

Prudence Murphy is an Australian artist specialising in photo-media. Prudence completed a Bachelor of Fine Arts with First Class Honours in 1999 and a Masters of Fine Arts (Research) at the College of Fine Arts, University of New South Wales in 2002.

Prudence's work examines the details of our daily existence, with an emphasis on the domestic, familiar and private. Prudence is drawn to what comes before, after, or in between decisive actions.

### Denise Proud and Anne Tietzel

Aunty Denise Proud is an Aboriginal woman born and raised in Cherbourg, Queensland and is a respected Elder, teacher and facilitator. Aunty Denise is a strong social justice advocate, tirelessly promoting the rights of her people and community and working in partnership with organisations on projects or initiatives aimed at improving awareness and understanding of Aboriginal and Torres Strait Islander cultures. She has over 40 years of experience working in early childhood education, prisons and implementing programs to improve outcomes for Aboriginal and Torres Strait Islander peoples and promote reconciliation.

Anne Tietzel has extensive experience within early childhood education and education policy in Queensland and Western Australia. Anne's teaching experience in kindergartens includes six years teaching in culturally immersed programs for Aboriginal and Torres Strait Islander children and families. She delivers in-service professional development in the areas of social justice, sustainability (social and environmental ecology) and policy to practice.

### June McLoughlin

June McLoughlin has expertise in service and policy development within early childhood education and care, disability, parenting and family support sectors. June has managed a variety of national and state-based projects designed to refocus early years services and provide support to practitioners to deliver more integrated evidenced-based services for families of young children.

Currently June is leading the establishment of a fully integrated Family and Children's Service within a major public/private partnership school redevelopment in Victoria.

# Queensland Early Childhood Annual Conference 2014 (cont)

## Program highlights (visit [www.candk.asn.au](http://www.candk.asn.au) for full conference program)

Saturday 7 June 2014	
7.30am	Registration opens
8.40am - 9.00am	Welcome/Welcome to Country/Official opening
9.00am - 10.00am	<b>Keynote address:</b> Mark McCrindle <b>The future of Australian children, families and educators</b>
10.00am - 10.30am	Morning tea
10.30am - 11.45am <b>Concurrent session 1</b>	Highlighted sessions <b>Wake up to the impact of sleep: The good, the bad and the ugly</b> John Joseph <b>Educational leadership: A myth or a reality: complexities, contradictions and opportunities</b> Anthony Semann <b>Great start, great futures: A lead model for transition in the Darling Downs South West Region</b> Melissa Kid & Rebecca Hand
11.55am - 1.10pm <b>Concurrent session 2</b>	Highlighted sessions <b>Leading Change Management: iPads in the early childhood setting</b> Sarah Thomas & Louise Twist <b>Reconciliation: Early childhood education and transformative leadership</b> Denise Proud & Anne Tietzel <b>Self regulation: The what, the why and the how - understandings and strategies</b> Desley Jones
1.10pm - 2.10pm	Lunch
2.10pm - 3.10pm	<b>Keynote address:</b> Professor Marilyn Fleer <b>Conceptual Play: Imagination and creativity for increased outcomes across different platforms of play in the early years</b>
3.20pm - 4.05pm <b>Concurrent session 3</b>	Highlighted sessions <b>Come on and move your body</b> Sue Lewin <b>Indigenous educators making a difference in the lives of young children</b> Lyn Moore & Denise Cedric
4.05pm - 4.30pm	Afternoon tea
4.30pm - 5.15pm <b>Concurrent session 4</b>	Highlighted sessions <b>The teacher in the 21st Century: Engaging with social media</b> Robyn Mercer <b>Read4Life: Creating local sustainable solutions through facilitative consultation</b> Dan Georgeson & Sue Hamilton-Smith

Sunday 8 June 2014	
7.45am - 9.20am <b>Conference breakfast</b>	<b>Annual networking breakfast</b> Rydges Southbank Hotel (located next to the Brisbane Convention and Exhibition Centre)
9.30am - 10.15am	<b>Keynote address:</b> Peter Baines <b>Hands across the water</b>
10.15am - 10.45am	Morning tea
10.45am - 12.00pm <b>Concurrent session 5</b>	Highlighted sessions <b>Opening the gates: Making a difference through school and community partnerships</b> June McLoughlin <b>Put on your oxygen masks</b> Kari Sutton <b>Sensory processing in the kindy</b> Vivienne Williams <b>Putting it all together: From curriculum to community</b> Jacqui Ruhle
12.10pm - 1.25pm <b>Concurrent session 6</b>	<b>Listen up! Helping little ones yarn, learn and play in the early years</b> Jasmyrn Adams & Jessica Edwards <b>The four worlds: Creating a balanced education for heart, the mind, the hands and the future</b> John Joseph <b>Drum up big</b> Tara Tucker <b>Language development in a curriculum of care</b> Katherine Bussey
1.25pm-2.10pm	Lunch
2.10pm-3.10pm <b>Closing session</b>	<b>Keynote address:</b> Dan Donahoo <b>In Conversation:</b> Virginia Trioli with Dan Donahoo

# Queensland Early Childhood Annual Conference 2014 (cont)

## Registration Form and Tax Invoice

**The Creche and Kindergarten Association Limited**  
ABN 59 150 737 849

Please complete each section of the form and return with payment to:  
C&K Events, 14 Edmondstone Street, Newmarket 4051 OR  
ckevents@candk.asn.au

This registration form is a tax invoice upon payment.

### Office Use Only

Date received:

C/C approval:

Entered by:

Date:

### Privacy Statement:

**A delegate list will be supplied to all conference exhibitors and sponsors.**

**Please tick if you do not consent to your name, organisation and email address being included in the list**

### A. REGISTRATION

All registrations arrival refreshment, morning and afternoon tea and lunch.

Registration Type	Early Bird closes 5 May 2014	From 5 May - 30 May 2014
<b>Friday only - includes Awards dinner</b> C&K branch/affiliate directors only	<input type="checkbox"/> \$345	<input type="checkbox"/> \$445
<b>One Day registration (select one)</b>  <input type="checkbox"/> Saturday <input type="checkbox"/> Sunday	<input type="checkbox"/> \$345	<input type="checkbox"/> \$445
<b>Two Day registration (select one)</b>  <input type="checkbox"/> Friday and Saturday (Friday C&K branch / affiliate directors only, includes Awards dinner) <input type="checkbox"/> Saturday and Sunday (Awards dinner not included)	<input type="checkbox"/> \$580	<input type="checkbox"/> \$680
<b>Three day registration</b>  <input type="checkbox"/> Friday, Saturday & Sunday C&K branch/affiliate directors only & includes Awards dinner	<input type="checkbox"/> \$700	<input type="checkbox"/> \$800
<b>Regional registration</b>  For those travelling further than 200km to the event  Approval is at organiser's discretion	<input type="checkbox"/> 2 day (Saturday & Sunday) registration \$430 <input type="checkbox"/> 3 day registration \$550	

### Social functions

- Friday evening event - Awards dinner** for C&K branch/affiliate staff only (complimentary with Friday only, Friday & Saturday and three day registrations)
- Friday awards dinner** \$75 per person (Only applicable if chosen 1 day or Saturday and Sunday registration)
- Sunday networking breakfast** (complimentary with Sunday, two day and three day registrations)

**B. DELEGATE INFORMATION**

First Name:	Surname:
Organisation:	Position:
Postal Address:	Suburb:
State:	Country:
Postcode:	Email address:
Telephone:	Mobile:
Dietary Requirements:	

**PAYMENT SUMMARY****Payment Summary**

Credit Card	\$
Cheque	\$
Money Order	\$
Branch Budget	\$

**Credit Card Payment**

Please charge \$

to my Mastercard/Visa

Cardholders Name:

Card Number:

Expiry Date:

Signature:

Date:

**Cheque/Money Order**

Please make cheques/money orders payable to  
The Creche and Kindergerten Association Limited

**Direct Deposit**

The Creche and Kindergerten Association Limited

Westpac

BSB 034081 AC 242612

Reference: Brisbane Conference [your surname]

**Branch Budget**

Tick box if amount to be deducted from branch  
budget

## Face to face training

Regionally focused face to face training is designed by C&K for all early childhood professionals across Queensland in accordance with identified and perceived needs and interests. It is also a way in which new ideas can be shared. All regions are offered both professional development days and workshops.

Professional development days occur on Saturdays, where one or more speakers present, and workshop sessions are included. Workshops are also offered on weekdays, usually in the late afternoon or evening in order to fit in with work schedules. There are also opportunities to attend sessions with parents, so take a look at our Parent Forums in your region.

Importantly, face to face training is also a great opportunity to come together with colleagues in your region to network and make new professional connections.



# National Quality Standard

13

C&K presents professional development across all 7 quality areas of the National Quality Standard

## Quality Area 1

Wednesday 19 March – Gold Coast | Tuesday 29 April – Toowoomba  
Thursday 8 May – Sunshine Coast | Thursday 31 July – Brisbane Central

### Making time for reflective practice

Early childhood professionals understand that reflective practice deepens our understandings about children and encourages us to make plans for and with children that emerge from a holistic perspective.

In this session participants will:

- think about the value of each child's social, emotional, physical, intellectual and spiritual wellbeing
- consider how unique connections to family, community, land and country influence teaching and learning
- reflect upon professional practices including relationships with children, play as a vehicle for learning, intentional teaching, environments for teaching and learning, cultural understandings, assessment and transitioning

**Who should attend?** Kindergartens, long day care, family day care, outside school hours care, Prep

**Experience level:** Intermediate/advanced

**Quality Areas:** 1

Online | Monday 21 July 4pm | Monday 18 August 4pm | Monday 15 September 4pm

### Re-evaluating the status of children as artists | Series

This 3-part online master class series, facilitated by Dr Barbara Piscitelli, will investigate prevailing understandings around children, art and artistry and seek to rethink and reposition young children as artists and consumers of art. The implications for educators and adults will be examined and discussed.

**Presenter:** Dr Barbara Piscitelli (AM)

In 1986, Barbara Piscitelli established an archive of children's art from Queensland and the Asia Pacific region. Barbara also curated a dozen exhibitions of children's art which were shown in Australia, America, Canada, Vietnam and China. In 2004, the Children's Art Archive became part of Queensland's heritage in the John Oxley Library at the State Library of Queensland.

Barbara has served as Chair of the Queensland Ministerial Cultural Policy Advisory Committee (2004–05), an advisory body for the Minister for the Arts. She is currently a member of the Board of Directors of the Queensland Museum and a Member of the Council of the National Museum of Australia. She was awarded a Member (General Division) of the Order of Australia on Australia Day in 2006.

**Who should attend?** Kindergartens, long day care, family day care, Prep

**Experience level:** Advanced

**Quality Areas:** 1

Tuesday 11 March – Emerald | Thursday 15 May – Mackay

### Documenting to inspire!

Capturing and communicating children's learning is an exciting and rewarding element of contemporary early childhood practice. Across days, weeks and months pedagogical documentation celebrates the unique journey of each child and provides insight into growing capabilities, dispositions and interests.

In this session participants will:

- discuss what should be regarded as pedagogical documentation
- think about who is involved in planning for play and documenting learning
- recognise the importance of critical reflection
- identify how effective documentation tracks children's learning in relation to the five learning outcomes of the Early Years Learning Framework

**Who should attend?** Kindergartens, long day care, family day care, outside school hours care, Prep

**Experience level:** Introductory/intermediate

**Quality Areas:** 1



Online | Wednesday 6 August

## Using ICT with kindergarten aged children

This session will explore best practice for incorporating Information Communication Technology (ICT) into an early years learning environment for kindergarten aged children. ICT offers many possibilities to extend children's learning. It is essential educators have a clear educational intent and continue reflective practice to ensure the appropriate use and best practice.

**Who should attend?** Kindergartens

**Experience level:** All educators

**Quality Areas:** 1

Online | Tuesday 5 August

## Curriculum in practice: Arts

The arts have always occupied a prominent position in the early childhood curriculum, providing children and educators with a shared means through which to explore and communicate ideas, interests and knowledge. This session will consider ways in which the creative potential of children can be developed with the aid of interested and collaborative adults.

**Who should attend?** Kindergartens, long day care, family day care, prep

**Experience level:** Introductory

**Quality Areas:**

Online | Wednesday 30 July

## Curriculum in practice: Information communication technology (ICT)

ICT is enjoying an increasingly prominent position in the early years sector, yet many educators are unsure of the most appropriate ways in which to use it. This session has been created to offer a practical focus on the effective use of ICT in early childhood teaching and learning environments.

**Who should attend?** Kindergartens, long day care, family day care, Prep

**Experience level:** Introductory

**Quality Areas:** 1

Online | Wednesday 20 August

## Curriculum in practice: Science

Children are very curious about the world they live in, how it works and how they fit within it. Every day there is potential to make observations, explore ideas and test theories. In this session our presenters will discuss ways in which science concepts can be explored with young children that are interesting and contextual.

**Who should attend?** Kindergartens, long day care, family day care, Prep

**Experience level:** Introductory

**Quality Areas:** 1



## Quality Area 2

Thursday 27 March – Brisbane North

### Supporting children's speech and language

Typically, young children communicate in a variety of ways and as they mature rely increasingly upon spoken language as their preferred way in which to interact with those around them. For some children, however, for one reason or another, they do not effectively develop their speech or language abilities and are thus inhibited to varying degrees. Although closely related, speech and language are quite different, with speech concerned with the 'mechanics' of talking and language concerned with understanding.

In this session a speech pathologist will assist participants to:

- develop an understanding of typical developmental speech and language milestones
- gain knowledge of speech disorders/delays
- gain knowledge of language disorders
- gain knowledge of other speech and language related disorders such as swallowing/feeding disorders and hearing impairment
- discuss how children and families can be supported

**Who should attend?** Kindergartens, long day care, family day care, outside school hours care, Prep

**Experience level:** Introductory/intermediate

**Quality Areas:** 2

## Quality Area 3

Thursday 13 March – Brisbane Bayside | Tuesday 14 October – Townsville  
Thursday 16 October – Rockhampton | Wednesday 22 October – Bundaberg

### Inclusive environments for teaching and learning

Effective early childhood teaching and learning environments encourage children to develop a strong sense of belonging and agency, where individual emotional, cultural, developmental and educational needs are addressed through careful attention to physical, social and temporal elements.

They are welcoming, flexible spaces that are filled with possibilities for all children.

In this session participants will:

- consider essential elements for all early childhood environments: scene setting - introducing ideas vs responding to children's interests
- reflect upon children's environmental presence
- explore teaching and learning in indoor and outdoor spaces
- think about routines
- discuss inclusion
- investigate community connections

**Who should attend?** Kindergartens, long day care, family day care, outside school hours care, Prep

**Experience level:** All educators

**Quality Areas:** 3

**What professional development  
will your team be involved in  
this year?**



**Book online  
[www.candk.asn.au](http://www.candk.asn.au)**



## **Certificates and surveys**

In order to make our practices more sustainable, we have moved our participant surveys and certificates to an online format.

Once you have completed a course, you will receive an email asking you to fill out a short online survey about the workshop/PD day. After you have completed the survey, you will be sent a certificate to keep in your electronic portfolio.

April - August

### Where the magic happens: Moving beyond traditions | Series

Excellence in leadership is contextual and will look different in various settings. Over the years we have been informed on a range of ways to lead others and ourselves. Sometimes these approaches have worked and sometimes they have not. So perhaps it's time to move beyond the traditions of leadership. Are you a leader with experience and knowledge of leadership and management? Do you yearn to hear and learn something new about leadership? Are you willing to enter a new space of thinking and theory about leadership? If so then this series of online learning opportunities is what you have been looking for. A community of leaders will come together on a regular basis to explore new and exciting ways of leading and together we will journey into new territory as we transform ourselves and our workplaces.

**Presenter:** Anthony Semann

Anthony Semann is a Director at Semann & Slattery, a national consulting and research company. Anthony has a degree in education, Masters qualification in sociology and is currently completing a PhD investigating the relationship between courage and leadership. He is a self-labelled 'leader-holic' and is intrigued by the ways in which individuals understand and enact personal and educational leadership. He has co-authored a number of books on management and leadership; authored and co-authored book chapters, including a recent chapter on race and identity, and has been an editor and reviewer for education and cultural studies journals.

Dates of sessions (series of 6 online workshops)

Session 1 - Wednesday 23 April - 4.30pm - 5.30pm

Session 2 - Wednesday 21 May - 4.30pm - 5.30pm

Session 3 - Wednesday 25 June - 4.30pm - 5.30pm

Session 4 - Tuesday 22 July - 4.30pm - 5.30pm

Session 5 - Tuesday 5 August - 4.30pm - 5.30pm

Session 6 - Wednesday 27 August 4.30pm - 5.30pm

**Who should attend?** Kindergartens, long day care, family day care, Prep

**Experience level:** Advanced

**Quality Areas:** 4

## Quality Area 5

Wednesday 30 July - Cairns

### Behaviour guidance vs behaviour management

For many of us, our childhood experience of discipline raises memories of our parents and others taking an authoritarian position. Expectations about behaviour were imposed upon us and transgressions were punished. Today, as adults, we are often uncertain about how we should act and more importantly how we can effectively support children to manage their own behaviour.

In this session participants will:

- reflect upon the rights of children
- review and reflect upon behaviour management approaches to discipline
- consider the benefits of a participatory guidance approach to discipline
- think about effective strategies to address and guide children's behaviour

**Who should attend?** Kindergartens, long day care, family day care, outside school hours care, Prep

**Experience level:** All educators

**Quality Areas:** 5

## Quality Area 5 (cont)

Tuesday 4 March – Townsville | Thursday 20 March – Rockhampton | Thursday 8 May – Brisbane Central

### Understanding anxiety

Young children experience anxiety for a variety of reasons and to varying degrees. For some children transitioning from home to kindergarten or care settings is cause for ongoing distress. For others an explanation is less easy to uncover.

In this session participants will:

- develop an understanding of what causes anxious behaviour in children
- learn to identify anxious behaviour in children
- consider how to most effectively support anxious children and their families

**Who should attend?** Kindergartens, long day care, family day care, outside school hours care, Prep

**Experience level:** All educators

**Quality Areas:** 5

Wednesday 12 March – Bundaberg | Tuesday 25 March – Brisbane Central | Tuesday 6 May – Cairns  
Wednesday 7 May – Brisbane South | Thursday 10 July – Rockhampton

### Positive approaches to teaching and learning – Developing strong relationships

At the start of each year early childhood educators are introduced to unfamiliar children and families, and sometimes to new colleagues and work environments. There are relationships to build, understandings to reach and new ideas to explore.

In some respects this is akin to starting a new job. So how do we cope with and manage this aspect of our professional lives?

Through experience and reflection we can develop a professional approach that supports all stakeholders: children, families, colleagues and ourselves.

In this session participants will:

- explore the importance of developing a strong and contextual professional and service philosophy
- consider how responsive, supportive and fruitful relationships can be nurtured with children, families and colleagues
- discuss how to effectively engage with communities in order to respond to the lives and needs of children and families

**Who should attend?** Kindergartens, long day care

**Experience level:** All educators

**Quality Areas:** 5, 6

## Quality Area 6

Wednesday 23 July – Townsville | Tuesday 29 July – Brisbane Bayside | Wednesday 15 October – Mackay

### Honouring Aboriginal & Torres Strait Islander perspectives

Enriching early childhood education and care environments with authentic Aboriginal and Torres Strait Islander perspectives is so much more than sharing Dreamtime stories and exploring art practices.

This session will:

- explore Aboriginal and Torres Strait Islander ways of being and knowing
- consider how learning outcomes for Aboriginal and Torres Strait Islander children can be improved
- reflect on the importance of strong, respectful and positive relationships
- support all educators to develop a strong understanding of Aboriginal and Torres Strait Islander culture that can be shared with all children and families

**Who should attend?** Kindergartens, long day care, family day care, outside school hours care, Prep

**Experience level:** Introductory/intermediate

**Quality Areas:** 6

## Quality Area 6 (cont)

Tuesday 18 March - Ipswich | Wednesday 26 March - Brisbane South

### Working effectively with cultural diversity

Contemporary Australia is undoubtedly one of the most culturally and linguistically diverse nations in the world and as such it is a complex, exciting place. With matters that define each of us culturally such as ethnicity, gender, religion, class, age and sexuality, we can sometimes find ourselves feeling challenged about how to effectively engage with others in our communities.

In this session participants will:

- reflect upon their own beliefs and attitudes
- consider why a strong sense of cultural identity is essential for children to thrive
- discuss how cultural beliefs, customs and dispositions need careful consideration when planning for play
- explore ways in which rich relationships with culturally and linguistically diverse families can be achieved
- uncover ways in which strong community connections can be made and enhanced
- discuss pathways to effective inclusion and support

**Who should attend?** Kindergartens, long day care, family day care, outside school hours care, Prep

**Experience level:** Intermediate/advanced

**Quality Areas:** 6

## Quality Area 7

Visit [www.candk.asn.au](http://www.candk.asn.au) for dates

### Applying for excellence - "Are you excellent?"

Did your service receive an overall rating of Exceeding? Has your service considered applying for the Excellence rating? Would you like to know more about the application process?

The purpose of the Excellent rating is to:

- Celebrate excellence in the delivery of education and care
- Engage and involve families and the community in the profession's discussion about quality and what is important in education and care
- Promote and reinforce the value of education and care and the people who work in the sector
- Recognise providers and educators who are champions of quality improvement
- All services who have achieved Exceeding are encouraged to attend this information session.

**Presenter:** Rhonda Livingstone (Senior Adviser, Excellent Rating, ACECQA)

**Who should attend?** Kindergartens, long day care, family day care

**Experience level:** All educators

**Quality Areas:** 7



## Take the first steps to an early childhood career

- The demand for qualified staff has never been greater in Australia.

### Qualifications offered:

#### CHC30712 Certificate III in Children's Services

The Certificate III in Children's Services provides students with the skills and knowledge to plan activities and provide care to children, facilitating their leisure and play, and enabling them to achieve their developmental outcomes.

#### CHC50908 Diploma of Children's Services (Early Childhood Education and Care)

The Diploma of Children's Services provides students with the skills and knowledge to planning, implementing and managing programs in Early Childhood Services, in accordance with licensing, accreditation and duty of care requirements. The Diploma level qualification enables workers to have responsibility for supervision of other staff and volunteers.

### Funding Options:

- Full Fee Paying
- Traineeships & Apprenticeships
- Certificate III Guarantee
- Fee Free Training for 2013 Year 12 Leavers
- VET- FEE HELP

### Study Options:

- Face to face classroom
- External Delivery
- Recognition of Prior Learning available
- Credit Transfer

### Support Offered:

- Assistance with vocational placement in C&K Services
- Tutorial sessions available
- Trainer support provided
- Access to C&K policies and procedures to assist with assessments

### For further information please contact:

C&K Learning Campus Reception

Ph: (07) 3513 2524 | [ckcollege@candk.asn.au](mailto:ckcollege@candk.asn.au) | [www.candk.asn.au/ckcollege](http://www.candk.asn.au/ckcollege)

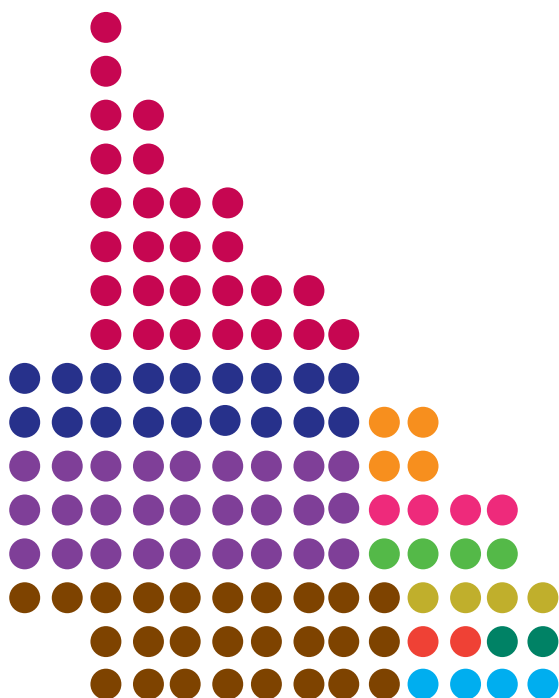
Book online at [www.candk.asn.au](http://www.candk.asn.au)





# Face to face training by region

C&K identified eleven regions where we can offer targeted professional learning has for you.



1. Far North Qld
2. Townsville & West
3. Mackay & Whitsundays
4. Rockhampton
5. Central west
6. Wide Bay Burnett
7. Sunshine Coast
8. South West & Darlin Downs
9. Ipswich
10. Gold Coast
11. Brisbane

## How to find a professional development event in your region

> **Step one:** Go to [www.candk.asn.au](http://www.candk.asn.au) and select C&K Events and Professional Development from menu bar

> **Step two:** Select your region

> **Step three:** Select your event

> **Step four:** Register online or download the manual registration form

## Region 1 – Cairns and Far North Queensland

Saturday 8 March

### Cairns Professional Development Day

This time, this place, this moment: Belonging, being and becoming in our communities

The C&K professional development program challenges educators with new ideas and invites them to revisit theories that inform innovative and high quality practice. It addresses the needs and interests of early childhood professionals in relation to their unique contexts and experiences.

**Who should attend?** Kindergartens, long day care, family day care, outside school hours care, Prep

**Experience level:** Introductory, intermediate, advanced

**Quality Areas:** 1, 2, 3, 4, 5, 6

Tuesday 6 May

### Positive approaches to teaching and learning – Developing strong relationships

At the start of each year early childhood educators are introduced to unfamiliar children and families, and sometimes to new colleagues and work environments. There are relationships to build, understandings to reach and new ideas to explore.

In some respects this is akin to starting a new job. So how do we cope with and manage this aspect of our professional lives?

Through experience and reflection we can develop a professional approach that supports all stakeholders; children, families, colleagues and ourselves.

In this session participants will:

- explore the importance of developing a strong and contextual professional and service philosophy
- consider how responsive, supportive and fruitful relationships can be nurtured with children, families and colleagues
- discuss how to effectively engage with communities in order to respond to the lives and needs of children and families

**Who should attend?** Kindergartens, long day care

**Experience level:** All educators

**Quality Areas:** 5, 6

Wednesday 30 July

### Behaviour guidance vs behaviour management

For many of us, our childhood experience of discipline raises memories of our parents and others taking an authoritarian position. Expectations about behaviour were imposed upon us and transgressions were punished. Today, as adults we are often uncertain about how we should act and more importantly how we can effectively support children to manage their own behaviour.

In this session participants will:

- reflect upon the rights of children
- review and reflect upon behaviour management approaches to discipline
- consider the benefits of a participatory guidance approach to discipline
- think about effective strategies to address and guide children's behaviour

**Who should attend?** Kindergartens, long day care, family day care, outside school hours care, Prep

**Experience level:** All educators

**Quality Areas:** 5

Wednesday 3 September

## Transition to school forum

Starting school is a significant moment for children and their families, and the changes that take place can be both exciting and challenging.

This interactive session for parents and educators will:

- address research findings related to the transition to school
- discuss challenges children face as they commence school
- suggest strategies for supporting transition and adjustment to school

**Who should attend?** Kindergartens, Prep

**Experience level:** All educators

**Quality Areas:** 5

## Region 2 – Townsville & West

Tuesday 4 March

### Understanding anxiety

Young children experience anxiety for a variety of reasons and to varying degrees. For some children transitioning from home to kindergarten or care settings is cause for ongoing distress. For others an explanation is less easy to uncover.

In this session participants will:

- develop an understanding of what causes anxious behaviour in children
- learn to identify anxious behaviour in children
- consider how to most effectively support anxious children and their families

**Who should attend?** Kindergartens, long day care, family day care, outside school hours care, Prep

**Experience level:** All educators

**Quality Areas:** 5

Saturday 3 May

### Townsville Professional Development Day

This event will explore in-depth a number of areas of interest specific to early childhood professionals in the Townsville region. The full program for this event will be available online at [www.candk.asn.au](http://www.candk.asn.au).

**Who should attend?** Kindergartens, long day care, family day care, outside school hours care, Prep

**Experience level:** All educators

**Quality Areas:** 1, 2, 3, 4, 5, 6



## Region 2 – Townsville & West (cont)

Saturday 24 May

### Parent forum

Parent forum sessions are designed to address particular areas of interest to parents of young children. They are opportunities for parents to listen to experts and engage in lively discussion. Early childhood educators are also welcome to attend.

Popular topics in this space include sleep, nutrition, behaviour guidance, speech and language development and learning through play. For information about the parent forum in your region please visit [candk.asn.au](http://candk.asn.au).

**Who should attend?** Parents, kindergartens, long day care, family day care, outside school hours care, Prep

Wednesday 23 July

### Honouring Aboriginal & Torres Strait Islander perspectives

Enriching early childhood education and care environments with authentic Aboriginal and Torres Strait Islander perspectives is so much more than sharing Dreamtime stories and exploring art practices.

This session will:

- explore Aboriginal and Torres Strait Islander ways of being and knowing
- consider how learning outcomes for Aboriginal and Torres Strait Islander children can be improved
- reflect on the importance of strong, respectful and positive relationships
- support all educators to develop a strong understanding of Aboriginal and Torres Strait Islander culture that can be shared with all children and families

**Who should attend?** Kindergartens, long day care, family day care, outside school hours care, Prep

**Experience level:** Introductory/intermediate

**Quality Areas:** 6

Tuesday 14 October

### Inclusive environments for teaching and learning

Effective early childhood teaching and learning environments are welcoming, flexible spaces that are filled with possibilities for all children.

In this session participants will:

- consider essential elements for all early childhood environments: scene setting - introducing ideas vs. responding to children's interests
- reflect upon children's environmental presence
- explore teaching and learning in indoor and outdoor spaces
- think about routines
- investigate community connections

**Who should attend?** Kindergartens, long day care, family day care, outside school hours care, Prep

**Experience level:** All educators

**Quality Areas:** 3



Saturday 29 March

## Mackay Professional Development Day

In this seminar, Dr Louise Porter will compare and contrast two styles of discipline: controlling discipline and a guidance approach. The guidance approach believes that children do well when they can. Like us, children want to be successful. Therefore, if they are making mistakes, it is not because they lack incentives to behave better, but because they lack skill - the main one of which is the ability to regulate their feelings and impulses. If we punished them for lacking skill, we would be punishing them for being children. Therefore, guidance does not use rewards or punishments but instead gives children information about their successes (acknowledgment) and, when their behaviour is disruptive, supports the children to get back in command of themselves so that they can return to considerate behaviour.

**Who should attend?** Kindergartens, long day care, family day care, outside school hours care, Prep

**Experience level:** All educators

**Quality Areas:** 1, 2, 3, 4, 5, 6

Thursday 15 May

## Documenting to inspire!

Capturing and communicating children's learning is an exciting and rewarding element of contemporary early childhood practice. Across days, weeks and months pedagogical documentation celebrates the unique journey of each child and provides insight into growing capabilities, dispositions and interests.

In this session participants will:

- discuss what should be regarded as pedagogical documentation
- think about who is involved in planning for play and documenting learning
- recognise the importance of critical reflection
- identify how effective documentation tracks children's learning in relation to the five learning outcomes of the Early Years Learning Framework

**Who should attend?** Kindergartens, long day care, family day care, outside school hours care, Prep

**Experience level:** Introductory/intermediate

**Quality Areas:** 1

Saturday 23 August

## Parent forum

Parent forum sessions are designed to address particular areas of interest to parents of young children. They are opportunities for parents to listen to experts and engage in lively discussion. Early childhood educators are also welcome to attend.

Popular topics in this space include sleep, nutrition, behaviour guidance, speech and language development and learning through play. For information about the parent forum in your region please visit [www.candk.asn.au](http://www.candk.asn.au).

**Who should attend?** Parents, kindergartens, long day care, family day care, outside school hours care, Prep



## Region 3 – Mackay & Whitsundays (cont)

Wednesday 15 October

### Honouring Aboriginal & Torres Strait Islander perspectives

Enriching early childhood education and care environments with authentic Aboriginal and Torres Strait Islander perspectives is so much more than sharing Dreamtime stories and exploring art practices.

This session will:

- explore Aboriginal and Torres Strait Islander ways of being and knowing
- consider how learning outcomes for Aboriginal and Torres Strait Islander children can be improved
- reflect on the importance of strong, respectful and positive relationships with Aboriginal and Torres Strait Islander families and communities
- support all educators to develop a strong understanding of Aboriginal and Torres Strait Islander culture that can be shared with all children and families

**Who should attend?** Kindergartens, long day care, family day care, outside school hours care, Prep

**Experience level:** Introductory/intermediate

**Quality Areas:** 6

## Region 4 – Rockhampton

Thursday 20 March

### Understanding anxiety

Young children experience anxiety for a variety of reasons and to varying degrees. For some children transitioning from home to kindergarten or care settings is cause for ongoing distress. For others an explanation is less easy to uncover.

In this session participants will:

- develop an understanding of what causes anxious behaviour in children
- learn to identify anxious behaviour in children
- consider how to most effectively support anxious children and their families

**Who should attend?** Kindergartens, long day care, family day care, outside school hours care, Prep

**Experience level:** All educators

**Quality Areas:** 5

Saturday 10 May

### Rockhampton Professional Development Day

This event will explore in-depth a number of areas of interest specific to early childhood professionals in the Rockhampton region. The full program for this event will be available online at [www.candk.asn.au](http://www.candk.asn.au).

**Who should attend?** Kindergartens, long day care, family day care, outside school hours care, Prep

**Experience level:** All educators

**Quality Areas:** 1, 2, 3, 4, 5, 6

Tuesday 29 July

## Positive approaches to teaching and learning – Developing strong relationships

At the start of each year early childhood educators are introduced to unfamiliar children and families, and sometimes to new colleagues and work environments. There are relationships to build, understandings to reach and new ideas to explore.

In some respects this is akin to starting a new job. So how do we cope with and manage this aspect of our professional lives?

Through experience and reflection we can develop a professional approach that supports all stakeholders: children, families, colleagues and ourselves.

In this session participants will:

- explore the importance of developing a strong and contextual professional and service philosophy
- consider how responsive, supportive and fruitful relationships can be nurtured with children, families and colleagues
- discuss how to effectively engage with communities in order to respond to the lives and needs of children and families

**Who should attend?** Kindergartens, long day care

**Experience level:** All educators

**Quality Areas:** 5,6

Thursday 16 October

## Inclusive environments for teaching and learning

Effective early childhood teaching and learning environments are welcoming, flexible spaces that are filled with possibilities for all children.

In this session participants will:

- consider essential elements for all early childhood environments: scene setting - introducing ideas vs. responding to children's interests
- reflect upon children's environmental presence
- explore teaching and learning in indoor and outdoor spaces
- think about routines
- investigate community connections

**Who should attend?** Kindergartens, long day care, family day care, outside school hours care, Prep

**Experience level:** All

**Quality Areas:** 3



Tuesday 11 March

### Documenting to inspire!

Capturing and communicating children's learning is an exciting and rewarding element of contemporary early childhood practice. Across days, weeks and months pedagogical documentation celebrates the unique journey of each child and provides insight into growing capabilities, dispositions and interests.

In this session participants will:

- discuss what should be regarded as pedagogical documentation
- think about who is involved in planning for play and documenting learning
- recognise the importance of critical reflection
- identify how effective documentation tracks children's learning in relation to the five learning outcomes of the Early Years Learning Framework

**Who should attend?** Kindergartens, long day care, family day care, outside school hours care, Prep

**Experience level:** Introductory/intermediate

**Quality Areas:** 1

Saturday 2 August

### Emerald Professional Development Day

This event will explore in-depth a number of areas of interest specific to early childhood professionals in the Emerald region. The full program for this event will be available online at [www.candk.asn.au](http://www.candk.asn.au).

**Who should attend?** Kindergartens, long day care, family day care, outside school hours care, Prep

**Experience level:** All educators

**Quality Areas:** 1, 2, 3, 4, 5, 6





Wednesday 12 March

## Positive approaches to teaching and learning – Developing strong relationships

At the start of each year early childhood educators are introduced to unfamiliar children and families, and sometimes to new colleagues and work environments. There are relationships to build, understandings to reach and new ideas to explore.

In some respects this is akin to starting a new job. So how do we cope with and manage this aspect of our professional lives?

Through experience and reflection we can develop a professional approach that supports all stakeholders: children, families, colleagues and ourselves.

In this session participants will:

- explore the importance of developing a strong and contextual professional and service philosophy
- consider how responsive, supportive and fruitful relationships can be nurtured with children, families and colleagues
- discuss how to effectively engage with communities in order to respond to the lives and needs of children and families

**Who should attend?** Kindergartens, long day care

**Experience level:** All educators

**Quality Areas:** 5,6

Saturday 16 August

## Bundaberg Professional Development Day

This event will explore in-depth a number of areas of interest specific to early childhood professionals in the Townsville region. The full program for this event will be available online at [www.candk.asn.au](http://www.candk.asn.au).

**Who should attend?** Kindergartens, long day care, family day care, outside school hours care, Prep

**Experience level:** All educators

**Quality Areas:** 1, 2, 3, 4, 5, 6

Wednesday 22 October

## Inclusive environments for teaching and learning

Effective early childhood teaching and learning environments are welcoming, flexible spaces that are filled with possibilities for all children.

In this session participants will:

- consider essential elements for all early childhood environments: scene setting - introducing ideas vs. responding to children's interests
- reflect upon children's environmental presence
- explore teaching and learning in indoor and outdoor spaces
- think about routines
- investigate community connections

**Who should attend?** Kindergartens, long day care, family day care, outside school hours care, Prep

**Experience level:** All educators

**Quality Areas:** 3

## Region 7 – Sunshine Coast

Saturday 22 March

### Sunshine Coast Professional Development Day

Beyond Mud Pies and Lullabies: Towards dynamic teaching and learning communities

The C&K professional development program challenges educators with new ideas and invites them to revisit theories that inform innovative and high quality practice. It addresses the needs and interests of early childhood professionals in relation to their unique contexts and experiences.

**Who should attend?** Kindergartens, long day care, family day care, outside school hours care, Prep

**Experience level:** All educators

**Quality Areas:** 1, 2, 3, 4, 5, 6

Thursday 8 May

### Making time for reflective practice

Early childhood professionals understand that reflective practice deepens our understandings about children and encourages us to make plans for and with children that emerge from a holistic perspective.

In this session participants will:

- think about the value of each child's social, emotional, physical, intellectual and spiritual well being
- consider how unique connections to family, community, land and country influence teaching and learning
- reflect upon professional practices including relationships with children, play as a vehicle for learning, intentional teaching, environments for teaching and learning, cultural understandings, assessment and transitioning

**Who should attend?** Kindergartens, long day care, family day care, outside school hours care, Prep

**Experience level:** Intermediate/advanced

Quality Areas: 1

Monday 1 September

### Transition to school forum

Starting school is a significant moment for children and their families, and the changes that take place can be both exciting and challenging.

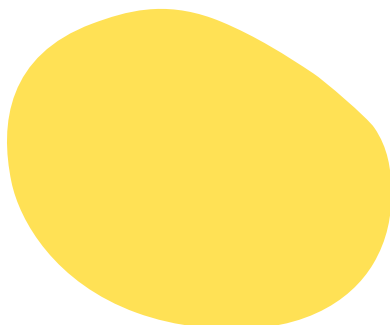
This interactive session for parents and educators will:

- address research findings related to the transition to school
- discuss challenges children face as they commence school
- suggest strategies for supporting transition and adjustment to school

**Who should attend?** Kindergartens, Prep, Long day care

**Experience level:** All educators

**Quality Areas:** 5



Tuesday 29 April

## Making time for reflective practice

Early childhood professionals understand that reflective practice deepens our understandings about children and encourages us to make plans for and with children that emerge from a holistic perspective.

In this session participants will:

- think about the value of each child's social, emotional, physical, intellectual and spiritual well being
- consider how unique connections to family, community, land and country influence teaching and learning
- reflect upon professional practices including relationships with children, play as a vehicle for learning, intentional teaching, environments for teaching and learning, cultural understandings, assessment and transitioning

**Who should attend?** Kindergartens, long day care, family day care, outside school hours care, Prep

**Experience level:** Intermediate/advanced

**Quality Areas:** 1

Saturday 30 August

## Toowoomba Professional Development Day

This event will explore in-depth a number of areas of interest specific to early childhood professionals in the Toowoomba region. The full program for this event will be available online at [www.candk.asn.au](http://www.candk.asn.au).

**Who should attend?** Kindergartens, long day care, family day care, outside school hours care, Prep

**Experience level:** All educators

**Quality Areas:** 1, 2, 3, 4, 5, 6

Saturday 30 August

## Transition to school forum

Starting school is a significant moment for children and their families, and the changes that take place can be both exciting and challenging.

This interactive session for parents and educators will:

- address research findings related to the transition to school
- discuss challenges children face as they commence school
- suggest strategies for supporting transition and adjustment to school

**Who should attend?** Kindergartens, Prep, Long day care

**Experience level:** All educators

**Quality Areas:** 5



## Region 9 – Ipswich

Tuesday 18 March

### Working effectively with cultural diversity

Contemporary Australia is undoubtedly one of the most culturally and linguistically diverse nations in the world and as such it is a complex, exciting place. With matters that define each of us culturally such as ethnicity, gender, religion, class, age and sexuality, we can sometimes find ourselves feeling challenged about how to effectively engage with others in our communities.

In this session participants will:

- reflect upon their own beliefs and attitudes
- consider why a strong sense of cultural identity is essential for children to thrive
- discuss how cultural beliefs, customs and dispositions need careful consideration when planning for play
- explore ways in which rich relationships with culturally and linguistically diverse families can be achieved
- uncover ways in which strong community connections can be made and enhanced
- discuss pathways to effective inclusion and support

**Who should attend?** Kindergartens, long day care, family day care, outside school hours care, Prep

**Experience level:** Intermediate/advanced

**Quality Areas:** 6

Tuesday 26 August

### Transition to school forum

Starting school is a significant moment for children and their families, and the changes that take place can be both exciting and challenging.

This interactive session for parents and educators will:

- address research findings related to the transition to school
- discuss challenges children face as they commence school
- suggest strategies for supporting transition and adjustment to school

**Who should attend?** Kindergartens, Prep, Long day care

**Experience level:** All educators

**Quality Areas:** 5



Wednesday 19 March

## Making time for reflective practice

Early childhood professionals understand that reflective practice deepens our understandings about children and encourages us to make plans for and with children that emerge from a holistic perspective.

In this session participants will:

- think about the value of each child's social, emotional, physical, intellectual and spiritual well being
- consider how unique connections to family, community, land and country influence teaching and learning
- reflect upon professional practices including relationships with children, play as a vehicle for learning, intentional teaching, environments for teaching and learning, cultural understandings, assessment and transitioning

**Who should attend?** Kindergartens, long day care, family day care, outside school hours care, Prep

**Experience level:** Intermediate/advanced

**Quality Areas:** 1

Saturday 2 August

## Gold Coast Professional Development Day

This event will explore in-depth a number of areas of interest specific to early childhood professionals in the Gold Coast region. The full program for this event will be available online at [www.candk.asn.au](http://www.candk.asn.au).

Who should attend? Kindergartens, long day care, family day care, outside school hours care, Prep

**Experience level:** All educators

**Quality Areas:** 1, 2, 3, 4, 5, 6

Monday 25 August

## Transition to school forum

Starting school is a significant moment for children and their families, and the changes that take place can be both exciting and challenging.

This interactive session for parents and educators will:

- address research findings related to the transition to school
- discuss challenges children face as they commence school
- suggest strategies for supporting transition and adjustment to school

**Who should attend?** Kindergartens, Prep

**Experience level:** All educators

**Quality Areas:** 5



## Region 11 – Brisbane

Thursday 13 March

### Inclusive environments for teaching and learning

Effective early childhood teaching and learning environments are welcoming, flexible spaces that are filled with possibilities for all children.

In this session participants will:

- consider essential elements for all early childhood environments: scene setting - introducing ideas vs. responding to children's interests
- reflect upon children's environmental presence
- explore teaching and learning in indoor and outdoor spaces
- think about routines
- investigate community connections

**Who should attend?** Kindergartens, long day care, family day care, outside school hours care, Prep

**Experience level:** All educators

**Quality Areas:** 3

Tuesday 25 March | Wednesday 7 May

### Positive approaches to teaching and learning – Developing strong relationships

At the start of each year early childhood educators are introduced to unfamiliar children and families, and sometimes to new colleagues and work environments. There are relationships to build, understandings to reach and new ideas to explore.

In some respects this is akin to starting a new job. So how do we cope with and manage this aspect of our professional lives?

Through experience and reflection we can develop a professional approach that supports all stakeholders: children, families, colleagues and ourselves.

In this session participants will:

- explore the importance of developing a strong and contextual professional and service philosophy
- consider how responsive, supportive and fruitful relationships can be nurtured with children, families and colleagues
- discuss how to effectively engage with communities in order to respond to the lives and needs of children and families

**Who should attend?** Kindergartens, long day care

**Experience level:** All educators

**Quality Areas:** 5, 6

Wednesday 26 March

### Working effectively with cultural diversity

Contemporary Australia is undoubtedly one of the most culturally and linguistically diverse nations in the world and as such it is a complex, exciting place. With matters that define each of us culturally such as ethnicity, gender, religion, class, age and sexuality, we can sometimes find ourselves feeling challenged about how to effectively engage with others in our communities.

In this session participants will:

- reflect upon their own beliefs and attitudes
- consider why a strong sense of cultural identity is essential for children to thrive
- discuss how cultural beliefs, customs and dispositions need careful consideration when planning for play
- explore ways in which rich relationships with culturally and linguistically diverse families can be achieved
- uncover ways in which strong community connections can be made and enhanced
- discuss pathways to effective inclusion and support

**Who should attend?** Kindergartens, long day care, family day care, outside school hours care, Prep

**Experience level:** Intermediate/advanced

**Quality Areas:** 6

Thursday 27 March

## Supporting children's speech and language

Typically, young children communicate in a variety of ways and as they mature rely increasingly upon spoken language as their preferred way in which to interact with those around them. For some children, however, for one reason or another, they do not effectively develop their speech or language abilities and are thus inhibited to varying degrees. Although closely related, speech and language are quite different, with speech concerned with the 'mechanics' of talking and language concerned with understanding.

In this session a speech pathologist will assist participants to:

- develop understanding of typical developmental speech and language milestones
- gain knowledge of speech disorders/delays
- gain knowledge of language disorders
- gain knowledge of other speech and language related disorders such as swallowing/feeding disorders and hearing impairment
- discuss how children and families can be supported

**Who should attend?** Kindergartens, long day care, family day care, outside school hours care, Prep

**Experience level:** Introductory/intermediate

**Quality Areas:** 2

Thursday 8 May

## Understanding anxiety

Young children experience anxiety for a variety of reasons and to varying degrees. For some children transitioning from home to kindergarten or care settings is cause for ongoing distress. For others an explanation is less easy to uncover.

In this session participants will:

- develop understanding of what causes anxious behaviour in children
- learn to identify anxious behaviour in children
- consider how to most effectively support anxious children and their families

**Who should attend?** Kindergartens, long day care, family day care, outside school hours care, Prep

**Experience level:** All educators

**Quality Areas:** 5

Saturday 21 June | Saturday 25 October

## Parent forum

Parent forum sessions are designed to address particular areas of interest to parents of young children. They are opportunities for parents to listen to experts and engage in lively discussion. Early childhood educators are also welcome to attend.

Popular topics in this space include sleep, nutrition, behaviour guidance, speech and language development and learning through play. For information about the parent forum in your region please contact [www.candk.asn.au](http://www.candk.asn.au).

**Who should attend?** Parents, Kindergartens, long day care, family day care, outside school hours care, Prep



## Region 11 – Brisbane (cont)

Tuesday 29 July

### Honouring Aboriginal & Torres Strait Islander perspectives

Enriching early childhood education and care environments with authentic Aboriginal and Torres Strait Islander perspectives is so much more than sharing Dreamtime stories and exploring art practices.

This session will:

- explore Aboriginal and Torres Strait Islander ways of being and knowing
- consider how learning outcomes for Aboriginal and Torres Strait Islander children can be improved
- reflect on the importance of strong, respectful and positive relationships with Aboriginal and Torres Strait Islander families and communities
- support all educators to develop a strong understanding of Aboriginal and Torres Strait Islander culture that can be shared with all children and families

**Who should attend?** Kindergartens, long day care, family day care, outside school hours care, Prep

**Experience level:** Introductory/intermediate

**Quality Areas:** 6

Thursday 31 July

### Making time for reflective practice

Early childhood professionals understand that reflective practice deepens our understandings about children and encourages us to make plans for and with children that emerge from a holistic perspective.

In this session participants will:

- think about the value of each child's social, emotional, physical, intellectual and spiritual well being
- consider how unique connections to family, community, land and country influence teaching and learning
- reflect upon professional practices including relationships with children, play as a vehicle for learning, intentional teaching, environments for teaching and learning, cultural understandings, assessment and transitioning

**Who should attend?** Kindergartens, long day care, family day care, outside school hours care, Prep

**Experience level:** Intermediate/advanced

**Quality Areas:** 1

Wednesday 27 August | Thursday 28 August

### Transition to school forum

Starting school is a significant moment for children and their families, and the changes that take place can be both exciting and challenging.

This interactive session for parents and educators will:

- address research findings related to the transition to school
- discuss challenges children face as they commence school
- suggest strategies for supporting transition and adjustment to school

**Who should attend?** Kindergartens, Prep, Long day care

**Experience level:** All educators

**Quality Areas:** 5

Saturday 13 September

### Teaching and learning with children birth to three

If you work with young children aged from birth to three this professional development day has been tailored to your professional needs and interests. The program will feature experts in the field who will address both practice and current theoretical perspectives

**Who Should attend?** Kindergartens, long day care, family day care

**Experience level:** All educators

**Quality Areas:** 1, 2, 3, 4, 5, 6



# Online

Online Professional Development gives you accessibility to engage with a variety of training opportunities regardless of your location.

# Exploring online professional development training opportunities

## What is a webinar?

A webinar is an event delivered online by a presenter to a group of individuals in various locations. Webinars are short training events conducted at specific times. They may consist of a single session or a series of sessions conducted over a nominated period of time. Presenters facilitate all webinar training events.

---

## Benefits:

- access training and information regardless of your location
  - participate in training without leaving the comfort of your service or home
  - information is presented in an interactive manner
  - multiple people can participate from the same service, at the same computer
- 

## Registration

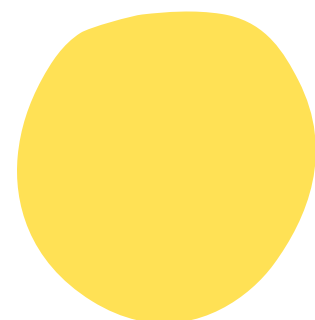
You need to register and pay via the registration link on the C&K website ([www.candk.asn.au](http://www.candk.asn.au)). All online professional development opportunities are listed under each region.

You will receive instructions (via email), from C&K Events, confirming your registration and details on how to login on the day. You will need to retain this email as this includes your link to login which is unique to you. A reminder will be distributed (via email) closer to the time of the event.

---

## Participation

Webinar training is an interactive experience. At the beginning of each session, the facilitator will spend at least five minutes talking through “housekeeping” which involves a brief explanation of the webinar environment. This will include instructions on how participants can communicate. Like face to face events, participants are expected to become involved in discussions, ask questions and provide thoughts and feedback. The more you interact, the more you will gain from the training session.



## Frequently asked questions

### What are the requirements to participate?

You will need basic computer skills and access to a computer with an internet connection. A broadband connection is recommended as dial up is not fast enough for the online training environment.

### Do I need special equipment?

For optimal participation it is preferable to use a headset with microphone and speakers (Logitech USB headset is recommended). Alternatively, you can use your computer speakers and participate via the Chat feature or an echo-cancelling desktop microphone.

### How do I login?

Participants login shortly before the start of the session by clicking on the link issued via email after registration.

### What happens if I have difficulty logging in to the webinar on the day?

An events officer is available to offer assistance. You can contact us on the helpdesk number 3513 2530.

### Can I login to the session at any time during the webinar?

As this is a live session, the facilitator will start at the scheduled time.

### Is the facilitator present during this training session?

Yes, the facilitator is there from beginning to end, like face to face training.

### Do we receive a certificate for training?

A short survey will be emailed to you at the end of the training. Once complete you will be issued with a certificate of attendance.

### If I register and pay but don't attend, am I entitled to a refund?

The cancellation policy is applicable to all training, face to face and online.



Starts Wednesday 23 April

## Where the magic happens: Moving beyond traditions | Series

Excellence in leadership is contextual and will look different in various settings. Over the years we have been informed on a range of ways to lead others and ourselves. Sometimes these approaches have worked and sometimes they have not. So perhaps it's time to move beyond the traditions of leadership. Are you a leader with experience and knowledge of leadership and management? Do you yearn to hear and learn something new about leadership? Are you willing to enter a new space of thinking and theory about leadership? If so then this series of online learning opportunities is what you have been looking for. A community of leaders will come together on a regular basis to explore new and exciting ways of leading and together we will journey into new territory as we transform ourselves and our workplaces.

**Presenter:** Anthony Semann

Anthony Semann is a Director at Semann & Slattery, a national consulting and research company. Anthony has a degree in education, Masters qualification in sociology and is currently completing a PhD investigating the relationship between courage and leadership. He is a self-labelled 'leader-holic' and is intrigued by the ways in which individuals understand and enact personal and educational leadership. He has co-authored a number of books on management and leadership; authored and co-authored book chapters, including a recent chapter on race and identity, and has been an editor and reviewer for education and cultural studies journals.

### Dates of sessions (series of 6 online workshops)

Session 1 - Wednesday 23 April - 4.30pm - 5.30pm

Session 2 - Wednesday 21 May - 4.30pm - 5.30pm

Session 3 - Wednesday 25 June - 4.30pm - 5.30pm

Session 4 - Tuesday 22 July - 4.30pm - 5.30pm

Session 5 - Tuesday 5 August - 4.30pm - 5.30pm

Session 6 - Wednesday 27 August 4.30pm - 5.30pm

**Who should attend?** Kindergartens, long day care, family day care, Prep

**Experience level:** Advanced

**Quality Areas:** 4, 7

Visit [www.candk.asn.au](http://www.candk.asn.au) for dates

## Applying for excellence - "Are you excellent?"

Did your service receive an overall rating of Exceeding? Has your service considered applying for the Excellence rating? Would you like to know more about the application process?

The purpose of the Excellent rating is to:

- Celebrate excellence in the delivery of education and care
- Engage and involve families and the community in the profession's discussion about quality and what is important in education and care
- Promote and reinforce the value of education and care and the people who work in the sector
- Recognise providers and educators who are champions of quality improvement

All services who have achieved Exceeding are encouraged to attend this information session.

**Presenter:** Rhonda Livingstone (Senior Adviser, Excellent Rating, ACECQA)

**Who should attend?** Kindergartens, long day care, family day care

**Experience level:** All educators

**Quality Areas:** 7

Visit [www.candk.asn.au](http://www.candk.asn.au) for dates

## Transition to school forum

Starting school is a significant moment for children and their families, and the changes that take place can be both exciting and challenging.

This interactive session for parents and educators will:

- address research findings related to the transition to school
- discuss challenges children face as they commence school
- suggest strategies for supporting transition and adjustment to school

**Who should attend?** Kindergartens, Prep, Long day care

**Experience level:** All educators

**Quality Areas:** 5

Wednesday 6 August

## Using ICT with kindergarten aged children

This session will explore best practice for incorporating Information Communication Technology (ICT) into an early years learning environment for kindergarten aged children. ICT offers many possibilities to extend children's learning. It is essential educators have a clear educational intent and continue reflective practice to ensure the appropriate use and best practice.

**Who should attend?** Kindergartens, Long day care

**Experience level:** All educators

**Quality Areas:** 1

Monday 21 July | Monday 18 August | Monday 15 September

## Re-evaluating the status of children as artists | Series

This 3-part online master class series, facilitated by Dr Barbara Piscitelli, will investigate prevailing understandings around children, art and artistry and seek to rethink and reposition young children as artists and consumers of art. The implications for educators and adults will be examined and discussed.

**Presenter:** Dr Barbara Piscitelli (AM)

In 1986, Barbara Piscitelli established an archive of children's art from Queensland and the Asia Pacific region. Barbara also curated a dozen exhibitions of children's art which were shown in Australia, America, Canada, Vietnam and China. In 2004, the Children's Art Archive became part of Queensland's heritage in the John Oxley Library at the State Library of Queensland.

Barbara has served as Chair of the Queensland Ministerial Cultural Policy Advisory Committee (2004-05), an advisory body for the Minister for the Arts. She is currently a member of the Board of Directors of the Queensland Museum and a Member of the Council of the National Museum of Australia. She was awarded a Member (General Division) of the Order of Australia on Australia Day in 2006.

**Who should attend?** Kindergartens, long day care, family day care, Prep

**Experience level:** Advanced

**Quality Areas:** 1

## Online workshops (cont)

Wednesday 30 July | Visit [www.candk.asn.au](http://www.candk.asn.au) for dates

### Curriculum in practice: Information communication technology (ICT)

ICT is enjoying an increasingly prominent position in the early years sector, yet many educators are unsure of the most appropriate ways in which to use it. This session has been created to offer a practical focus on the effective use of ICT in early childhood teaching and learning environments.

**Who should attend?** Kindergartens, long day care, family day care, Prep

**Experience level:** Introductory

**Quality Areas:** 1

Tuesday 5 August | Visit [www.candk.asn.au](http://www.candk.asn.au) for dates

### Curriculum in practice: Arts

The arts have always occupied a prominent position in the early childhood curriculum, providing children and educators with a shared means through which to explore and communicate ideas, interests and knowledge. This session will consider ways in which the creative potential of children can be developed with the aid of interested and collaborative adults.

**Who should attend?** Kindergartens, long day care, family day care, Prep

**Experience level:** Introductory

**Quality Areas:** 1

Wednesday 20 August | Visit [www.candk.asn.au](http://www.candk.asn.au) for dates

### Curriculum in practice: Science

Children are very curious about the world they live in, how it works and how they fit within it. Every day there is potential to make observations, explore ideas and test theories. In this session our presenters will discuss ways in which science concepts can be explored with young children that are interesting and contextual.

**Who should attend?** Kindergartens, long day care, family day care, Prep

**Experience level:** Introductory

**Quality Areas:** 1



# Specialist C&K courses (for C&K Branch and Affiliate services)

Learning is like rowing upstream:  
not to advance is to drop back  
- Chinese Proverb

## Specialist C&K courses

Online | Various dates | Visit [www.candk.asn.au](http://www.candk.asn.au) for dates

### Engaging with Quality Improvement Plans (QIP)

Maintaining the momentum for continuous improvement requires educators to work within a culture of enquiry, wonder and engagement – the same type of culture which we hope to create for children. This culture will help educators to embrace the types of changes in their service that will enrich and improve outcomes for children and families. A tool that can help educators to achieve this is the QIP. This workshop will introduce participants to C&K's new QIP template and outline the many practical tips in C&K's QIP Companion Guide.

**Who should attend?** Directors, family day care coordinators, affiliate management committee

**Experience level:** Intermediate

**Quality Areas:** 7

Online | Held monthly from March | Visit [www.candk.asn.au](http://www.candk.asn.au) for dates

### Reaching for exceeding in Quality Area 1-7 | Series

#### Separate session for each Quality Area

National Quality Standard 7.2 requires services to demonstrate a commitment to continuous improvement. It is important that services do not overlook this requirement when waiting for or following an Assessment and Rating visit. In other words educators must continue to maintain the momentum for continuous improvement. This workshop series will encourage educators to reflect upon their current practice within each quality area and engage in continuous improvement. Participants will:

- Hear the thoughts and ideas of educators who have achieved 'Exceeding'
- Find out what 'Exceeding' practice looks like
- Go back to their service with goals and strategies to add to their Quality Improvement Plan

These workshops are ideal for educators and services that are operating at 'Working Towards' or 'Meeting'. Participants can attend the whole series or individual workshops.

**Who should attend?** Kindergarten, long day care, family day care

**Experience level:** Intermediate

**Quality Areas:** 1, 2, 3, 4, 5, 6, 7

Online | Visit [www.candk.asn.au](http://www.candk.asn.au) for dates

### C&K Child Protection Framework for C&K services and committees

C&K is excited to launch a new child protection framework that will provide greater guidance for C&K educators and management committees. The framework encompasses four areas of child protection strategy:

- Prevention and advocacy
- Responding to child protection matters
- Reporting and recording child protection matters
- Continuous improvement

As the framework is a significant change to C&K policy, everyone is strongly encouraged to attend this workshop or road show event.

**Who should attend?** All C&K services

**Experience level:** Introductory

**Quality Areas:** 2

Online | Various dates | Visit [www.candk.asn.au](http://www.candk.asn.au) for dates

### Introduction to C&K policy for educators and committees

C&K has an extensive policy library which guides educators and many aspects of service operations. It is important that educators and affiliate management committee representatives have a clear understanding of C&K policy framework, and how C&K policy impacts upon service delivery and relates to the National Quality Framework. This workshop will outline how C&K policy documents are structured, developed and reviewed.

**Who should attend?** Directors, family day care coordinators, affiliate management committees

**Experience level:** Intermediate

**Quality Areas:** 7



Online | Monday 24 March | Visit [www.candk.asn.au](http://www.candk.asn.au) for dates

## Choosing appropriate software

Many educators have been inspired to source ICT devices for their programs and services. This is only the beginning of the journey as there are many programs and apps available for devices that are not suitable and engage children in repetitive, limited learning experiences. This session will discuss selecting software in line with *C&K Building waterfalls* to support and progress children across a range of learning outcomes.

**Who should attend?** Kindergartens, long day care, family day care

**Experience level:** Introductory

**Quality Areas:** 1

Online | Wednesday 30 April | Wednesday 3 September | Visit [www.candk.asn.au](http://www.candk.asn.au) for dates

## Showcasing ICT practices

Educators will share and discuss the implementation of an ICT device or program. Educators will outline the interest that arose in the children, the challenges and the successes. Discussion will also consider the children's learning and how they contributed and participated in this experience. This discussion will be facilitated by an Early Childhood Advisor.

**Who should attend?** Kindergartens, long day care, family day care

**Experience level:** Introductory

**Quality Areas:** 1

Online | Wednesday 18 June | Visit [www.candk.asn.au](http://www.candk.asn.au) for dates

## Documenting with ICT - Educators practice

ICT offers educators possibilities to document alongside children. This will be a practical session of what and how educators have captured learning using a range of ICT devices iPads, cameras and LED screens. It will cover considerations for privacy and confidentiality to protect children and families and comply with regulations.

**Who should attend?** Kindergartens, long day care, family day care

**Experience level:** Introductory

**Quality Areas:** 1

Online | Wednesday 23 July | Visit [www.candk.asn.au](http://www.candk.asn.au) for dates

## Teaching and learning with ICT

This session will introduce educators to working with ICT devices and practices in an early years learning environment. For ICT to be appropriate, relevant and safe for children, families and educators, educators need to be using ICT with a clear educational intent to support, extend and enrich children's learning. We are working towards children becoming creators with ICT rather than consumers of ICT.

**Who should attend?** Kindergartens, long day care, family day care

**Experience level:** Introductory

**Quality Areas:** 1

Online | Tuesday 4 November | Visit [www.candk.asn.au](http://www.candk.asn.au) for dates

## Innovations with ICT

A discussion of the innovations and development of ICT in C&K services during 2014. This session will be presented by the ICT Resources and Development Team. It will cover how ICT has been used effectively to support children's learning and teaching. It will introduce research and practices that have informed, changed and consolidated pedagogical practices.

**Who should attend?** Kindergartens, long day care, family day care

**Experience level:** Introductory

**Quality Areas:** 1

## Specialist C&K courses (cont)

Online | Held monthly from March | Visit [www.candk.asn.au](http://www.candk.asn.au) for dates

### **C&K Building waterfalls online learning circles**

These online groups, facilitated by early childhood advisors, provide an opportunity for C&K educators from all settings to come together when they wish for reflective discussion about *C&K Building waterfalls*. Questions can be answered, and ideas, practice and understandings explored. Participation is highly recommended for those who have completed the *C&K Building waterfalls* recorded online professional development package. Experienced educators can also participate to share their knowledge and refresh their understandings.

**Who should attend?** Kindergartens, long day care, family day care

**Experience level:** Introductory

**Quality Areas:** 1

Face to face | Tuesday 1 April Tuesday 23 September | Visit [www.candk.asn.au](http://www.candk.asn.au) for dates

### **C&K Building waterfalls Professional Development Day**

*C&K Building waterfalls* has been guiding practice across C&K services since 2006, initially as a framework and more recently, in its second revised edition, as a suite of guidelines for educators working with children aged birth to three and kindergarten aged children. This full day long course will unpack and explore *C&K Building waterfalls*, looking closely at all aspects of the documents, including the Currents of thought, environments for teaching and learning, and curriculum decision making. The *C&K Spectrum of Learning* will also be discussed.

**Who should attend?** Kindergartens, long day care, family day care

**Experience level:** Introductory

**Quality Areas:** 1

# Community connections

A helpful guide to community organisations who provide specialist services and support for children & families.

AEIOU Foundation  
[www.aeiou.org.au](http://www.aeiou.org.au)

Australasian Society of Clinical Immunology  
and Allergy (Anaphylaxis)  
[www.allergy.org.au](http://www.allergy.org.au)

Asthma Foundation  
[www.asthmaaustralia.org.au](http://www.asthmaaustralia.org.au)

Autism Queensland  
[www.autismqld.com.au](http://www.autismqld.com.au)

Royal Queensland Bush Children's Health  
Scheme  
[www.bushkids.org.au](http://www.bushkids.org.au)

Cerebral Palsy League  
[www.cplqld.org.au](http://www.cplqld.org.au)

Cystic Fibrosis Queensland  
[www.cysticfibrosis.org.au/qld](http://www.cysticfibrosis.org.au/qld)

Diabetes Queensland  
[www.diabetesqueensland.org.au](http://www.diabetesqueensland.org.au)

Down Syndrome Australia  
[www.downsyndrome.org.au](http://www.downsyndrome.org.au)

Early Childhood Australia  
[www.earlychildhoodaustralia.org.au](http://www.earlychildhoodaustralia.org.au)

Early Years Centres  
<http://deta.qld.gov.au/earlychildhood/families/early-years-centres.html>

Epilepsy Australia  
[www.epilepsyaustralia.net](http://www.epilepsyaustralia.net)

Family Planning Queensland  
[www.fpq.org.au](http://www.fpq.org.au)

Hear and Say  
[www.hearandsaycentre.com.au](http://www.hearandsaycentre.com.au)

Indigenous Professional Support Unit  
[www.ipsu.com.au](http://www.ipsu.com.au)

KidsMatter Early Childhood  
[www.kidsmatter.edu.au/ec/](http://www.kidsmatter.edu.au/ec/)

Medicare Locals  
[www.amlalliance.com.au](http://www.amlalliance.com.au)

Multicultural Development Association  
[www.mdainc.org.au](http://www.mdainc.org.au)

Noah's Ark (specialist services for children with  
disabilities and additional needs)  
[www.noahsark.net.au](http://www.noahsark.net.au)

Nutrition Australia  
[www.nutritionaustralia.org/qld](http://www.nutritionaustralia.org/qld)

Parent Connect Initiative  
[www.communities.qld.gov.au/disability/support-and-services/our-services/parent-connect-initiative](http://www.communities.qld.gov.au/disability/support-and-services/our-services/parent-connect-initiative)

Play Connect Playgroups (playgroups for  
children with ASD)  
[www.playgroupaustralia.org.au/National-Programs-2/Play-Connect.aspx](http://www.playgroupaustralia.org.au/National-Programs-2/Play-Connect.aspx)

Playgroup Queensland  
[www.playgroupqueensland.com.au](http://www.playgroupqueensland.com.au)

The Pyjama Foundation  
[www.thepyjamafoundation.com](http://www.thepyjamafoundation.com)

Raising Children Network (parenting website)  
[www.raisingchildren.net.au](http://www.raisingchildren.net.au)

Relationships Australia Queensland  
[www.raq.org.au](http://www.raq.org.au)

Vision Australia  
[www.visionaustralia.org.au](http://www.visionaustralia.org.au)



14 Edmonstone St  
Newmarket 4051,  
Queensland

[ckevents@candk.asn.au](mailto:ckevents@candk.asn.au) | [www.candk.asn.au](http://www.candk.asn.au)  
**ABN:** 59 150 737 849

*Where children come first*